

AASS Antibody (C-term)
Purified Rabbit Polyclonal Antibody (Pab)
Catalog # AP11094b**Specification**

AASS Antibody (C-term) - Product Information

Application	WB, FC,E
Primary Accession	O9UDR5
Other Accession	NP_005754.2
Reactivity	Human
Host	Rabbit
Clonality	Polyclonal
Isotype	Rabbit IgG
Calculated MW	102132
Antigen Region	805-834

AASS Antibody (C-term) - Additional Information**Gene ID** 10157**Other Names**

Alpha-aminoadipic semialdehyde synthase, mitochondrial, LKR/SDH, Lysine ketoglutarate reductase, LKR, LOR, Saccharopine dehydrogenase, SDH, AASS

Target/Specificity

This AASS antibody is generated from rabbits immunized with a KLH conjugated synthetic peptide between 805-834 amino acids from the C-terminal region of human AASS.

Dilution

WB~~1:1000

FC~~1:10~50

E~~Use at an assay dependent concentration.

Format

Purified polyclonal antibody supplied in PBS with 0.09% (W/V) sodium azide. This antibody is prepared by Saturated Ammonium Sulfate (SAS) precipitation followed by dialysis against PBS.

Storage

Maintain refrigerated at 2-8°C for up to 2 weeks. For long term storage store at -20°C in small aliquots to prevent freeze-thaw cycles.

Precautions

AASS Antibody (C-term) is for research use only and not for use in diagnostic or therapeutic procedures.

AASS Antibody (C-term) - Protein Information**Name** AASS ([HGNC:17366](#))

Function Bifunctional enzyme that catalyzes the first two steps in lysine degradation.

Cellular Location
Mitochondrion.

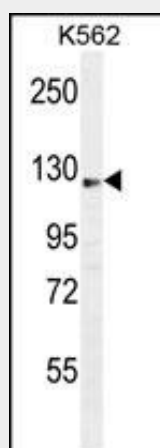
Tissue Location
Expressed in all 16 tissues examined with highest expression in the liver

AASS Antibody (C-term) - Protocols

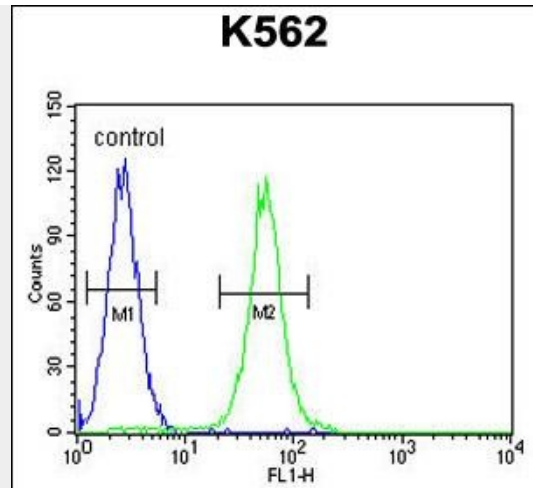
Provided below are standard protocols that you may find useful for product applications.

- [Western Blot](#)
- [Blocking Peptides](#)
- [Dot Blot](#)
- [Immunohistochemistry](#)
- [Immunofluorescence](#)
- [Immunoprecipitation](#)
- [Flow Cytometry](#)
- [Cell Culture](#)

AASS Antibody (C-term) - Images



AASS Antibody (C-term) (Cat. #AP11094b) western blot analysis in K562 cell line lysates (35ug/lane). This demonstrates the AASS antibody detected the AASS protein (arrow).



AASS Antibody (C-term) (Cat. #AP11094b) flow cytometric analysis of K562 cells (right histogram) compared to a negative control cell (left histogram). FITC-conjugated goat-anti-rabbit secondary antibodies were used for the analysis.

AASS Antibody (C-term) - Background

This gene encodes a bifunctional enzyme that catalyzes the first two steps in the mammalian lysine degradation pathway. The N-terminal and the C-terminal portions of this enzyme contain lysine-ketoglutarate reductase and saccharopine dehydrogenase activity, respectively, resulting in the conversion of lysine to alpha-aminoadipic semialdehyde. Mutations in this gene are associated with familial hyperlysinemia.

AASS Antibody (C-term) - References

Sacksteder, K.A., et al. Am. J. Hum. Genet. 66(6):1736-1743(2000)
Papes, F., et al. Biochem. J. 344 PT 2, 555-563 (1999) :